


EGRO
SWISS COFFEE TECHNOLOGY



one

ENGLISH 简体中文



ECF0
19:14



RISTRETTO



ESPRESSO



COFFEE



2x RISTRETTO



2x ESPRESSO



2x COFFEE

Water / Hot



COFFEE

PLEASE INSERT COIN OR CARD

NO. 1



Content

目录

Operator 操作员

Switch ON/OFF 打开/关闭.....	8
-----------------------------	---

Use 使用.....	10
----------------	----

Cleanings 清洁.....	18
----------------------	----

Manager 管理员

Settings 设置.....	32
---------------------	----

Configuring new products 配置新产品.....	46
--	----

Uploading pictures/videos 上传图片/视频.....	48
---	----

Changing the label (Keypad) 更改标签（键盘）.....	49
--	----

General information 一般信息

Display messages 显示消息.....	52
-------------------------------	----

Installation and start-up 安装与启动.....	54
---	----

Errors and warnings 错误与警告.....	62
-----------------------------------	----

Technical data 技术数据.....	66
-----------------------------	----

Safety instructions/Legal information 安全说明/法律信息.....	68
---	----

Optional equipment 可选设备.....	71
---------------------------------	----

Overview

概述

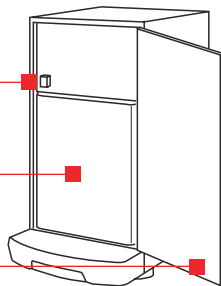
* Only with fridge/cooling box
仅具有冰箱/冷藏箱



ON/OFF Switch
开关

Milk container
牛奶容器

Fridge door
冰箱门

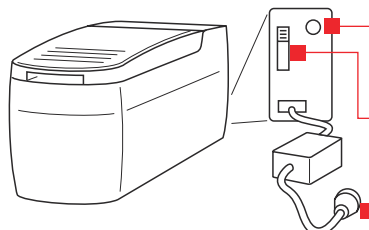


Power indicator
电源指示灯

● = ok

Function switch (never adjust)
功能开关 (从不调节)

Mains adapter with plug
带插头的电源适配器



Interface

界面



Touch
触摸

Symbols:
符号：



Auto Power
自动电源



Register mode
支付模式



* Coffee boiler
咖啡煮器



Boiler filling
煮器加注



* Steam boiler
蒸汽煮器



Self service
自助服务

Further information:
更多信息：

1 Press 5 seconds
按 5 秒钟

2 Select «Video»
选择 «视频»

Steam temperature (iSteam only)
蒸汽温度 (仅 iSteam)

Progress
Fortschritt

Stop
停止

Information
信息

* Symbols flash while heating
加热时符号闪烁

Select 1 product
选择 1 产品

...or preselect more
...或预选更多

Processing product
正在处理产品

Product not available
产品不可用

Next brewing
下一次煮烧

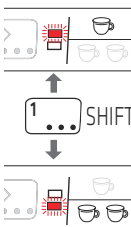
Upcoming brewings
即将进行的煮烧

Browse
浏览

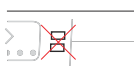


Keypad
键盘

Toggle with...
切换按钮...



Not available:
不可用：



Availability
可用性



Progress...
进度...

For 1 product
对于 1 产品

Preselection
预选

Stop
停止

Navigation
导航



For Manager and technician use only
仅限管理员和技术人员使用

Dear customer

尊敬的客户

First of all, we thank you for choosing Egro.

We are confident that the product you have purchased will meet all your expectations. The coffee system you are about to use is the outcome of extensive research and development.

The coffee machine is the most efficient, user-friendly and well designed machine of its kind.

This manual outlines the correct use and maintenance and will help you get the best results from your machine.

We trust you will find our explanations clear and we may continue to earn your business in the future.

首先，我们感谢您选择 Egro。

我们坚信您购买的产品将符合您的所有期望。您将使用的咖啡系统是我们广泛研发的成果。

本手册概括了咖啡机的正确使用和维护，并将帮助您使用您的咖啡机制作最美味的饮品。我们相信您将充分理解我们的解释，并且未来我们可继续赢得您的业务。



Content

目录

Operator 操作员

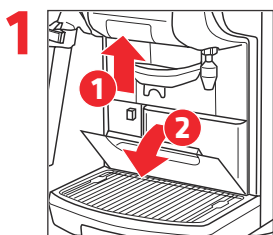
Switch ON/OFF 打开/关闭.....	8
Making coffee/tea with Touch 使用触摸屏冲咖啡/茶.....	10
Making coffee/tea with keypad 使用键盘冲咖啡/茶.....	12
Using the Steam wand/iSteam 使用蒸汽棒/iSteam.....	14
During use 使用过程中.....	16
Daily cleaning 日常清洁.....	18
Weekly cleaning of the bean hoppers 每周清洁咖啡豆容器.....	20
Weekly cleaning (with fridge) 每周清洁（配有冰箱）.....	22
Daily cleaning (with cooling box) 每周清洁（配有冷藏箱）.....	24
Weekly cleaning of the fridge 每周清洁冰箱.....	26
Weekly cleaning of the coolbox 每周清洁冷藏箱.....	28

Switch ON

打开

Caution: Automatic rinse may begin upon start-up! Warning: Hot water!

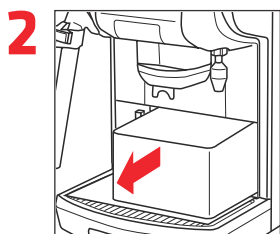
注意：启动时可能开始自动冲刷！警告：热水！



Open front cover

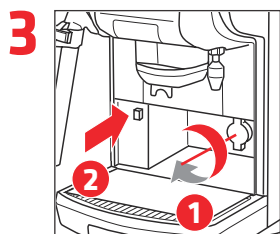
打开前盖

! Unlock with key if necessary
必要时使用钥匙解锁



Remove grounds drawer

取出咖啡渣存放盒



Open water tap, press Power button

打开水龙头，按电源按钮



Insert grounds drawer

Close front cover

插入咖啡渣存放盒
关闭前盖



Wait until machine is ready to use

一直等到机器已准备使用

! Switch on fridge/cooling box
打开冰箱/冷藏箱电源



Switch on fridge/cooling box

打开冰箱/冷藏箱电源

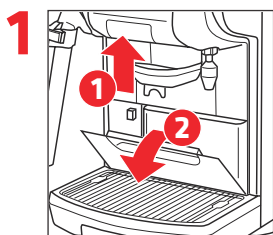
! If available
如果可用

Switch OFF

关闭

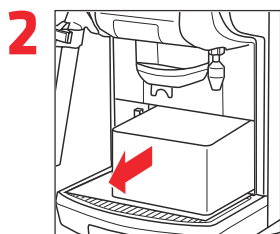
If required, switch off fridge/cooling box as well

必要时还要关闭冰箱/冷藏箱

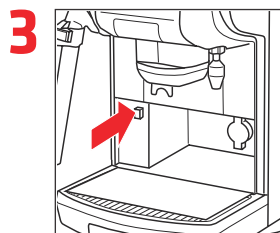


1 Open front cover
打开前盖

! Unlock with key if necessary
必要时使用钥匙解锁



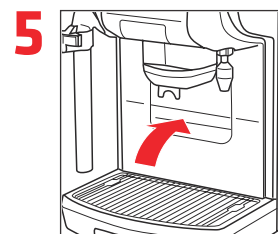
2 Remove grounds drawer
取出咖啡渣存放盒



3 Press Power button
按电源按钮



4 Close water tap
关闭水龙头



5 Insert grounds drawer
Close front cover
插入咖啡渣存放盒
关闭前盖



6 Switch off fridge/cooling box
关闭冰箱/冷藏箱电源

! Store milk at a cool place
将牛奶存放在低温位置



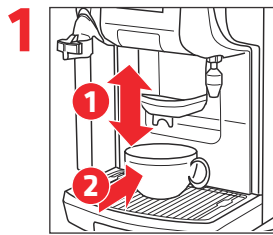
Use (Touch)

使用（触摸屏）



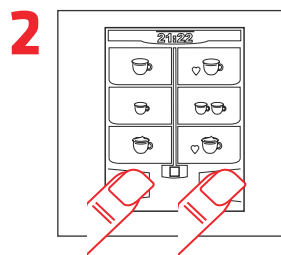
Preparing coffee products

准备咖啡制品

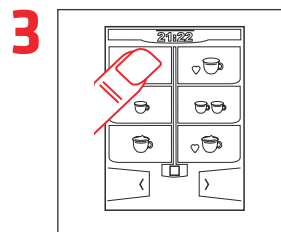


1 Put cup under coffee outlet
将杯子放在咖啡出口下方

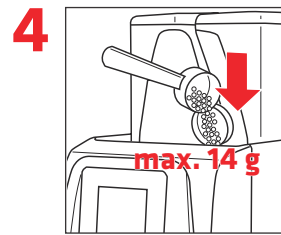
! Adjust coffee outlet
调节咖啡出口



2 Select page
选择页

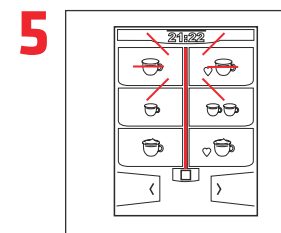


3 Select product
选择产品



4 If prompted: insert ground coffee
如果提示：插入咖啡机电源

! Only use ground coffee
仅使用磨制咖啡



5 Wait for end of preparation
等待制备结束

! Press STOP for manual abort
按“停止”可手动中断

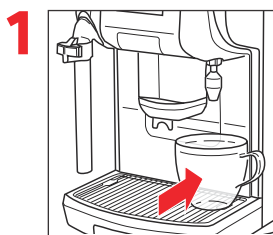


6 Remove cup when finished
完成时取下杯子

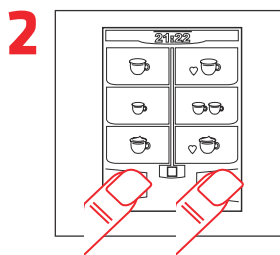


Preparing hot water (tea)

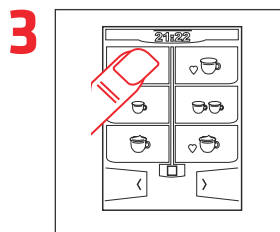
准备热水（茶）



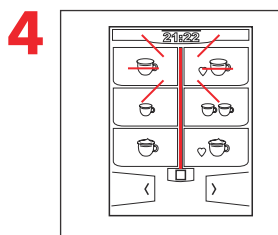
1 Put cup under hot water spout
将杯子放在热水喷管下方



2 Select page
选择页



3 Select product
选择产品



4 Wait for end of preparation
等待制备结束

! Press STOP for manual abort
按“停止”可手动中断



5 Remove cup when finished
完成时取下杯子

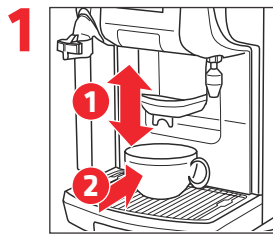


Use (Keypad)

使用（键盘）

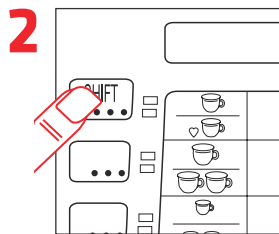


Preparing coffee products 准备咖啡制品



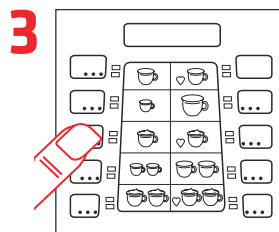
1 Put cup under coffee outlet
将杯子放在咖啡出口下方

! Adjust coffee outlet
调节咖啡出口

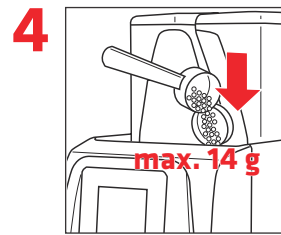


2 Select product layer
选择产品层

! Only if 16 products available
仅在 16 种产品可用时

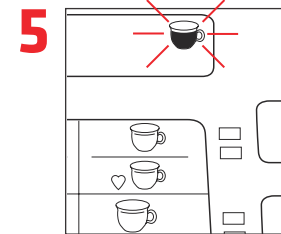


3 Select product
选择产品



4 If prompted: insert coffee powder
如果提示：插入咖啡机电源

! Only use ground coffee
仅使用磨制咖啡



5 Wait for end of preparation
等待制备结束

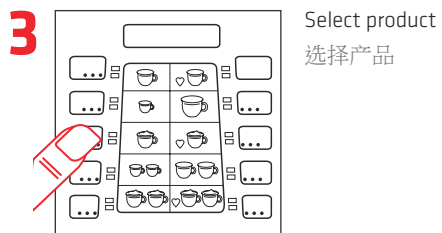
! Press STOP for manual abort
按“停止”可手动中断



6 Remove cup when finished
完成时取下杯子



Preparing hot water (tea) 准备热水（茶）



! Press STOP for manual abort
按“停止”可手动中断



Use

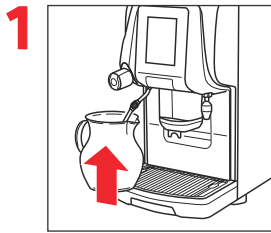
使用



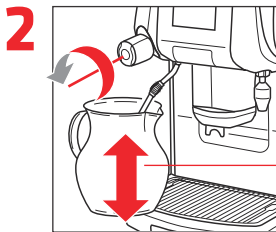
Steam wand 蒸汽棒

! Warning: Hot surface
警告：表面热

For best results: store milk at $\leq 5^{\circ}\text{C}$ ($\leq 41^{\circ}\text{F}$).
为取得最佳结果：在 $\leq 5^{\circ}\text{C}$ ($\leq 41^{\circ}\text{F}$) 的温度下存放牛奶



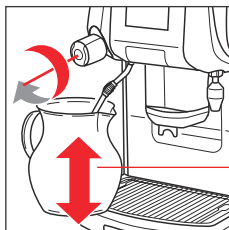
Submerge steam wand in milk
将蒸汽棒浸没在牛奶中



To pulse milk turn left
要对牛奶进行脉冲，转向左侧

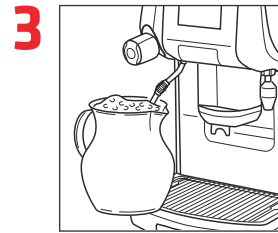
Move up and down to froth
向上/向下移动，制作奶泡

or | 或

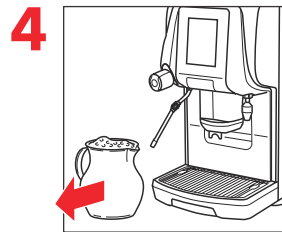


For continuous steam turn right
为实现持续蒸汽，转向右侧

Move up and down to froth
向上/向下移动，制作奶泡



To stop turn back to neutral position
要停止，返回的中间位置



Remove product when finished
完成时取出产品



Clean steam wand
清洁蒸汽棒



iSteam
iSteam

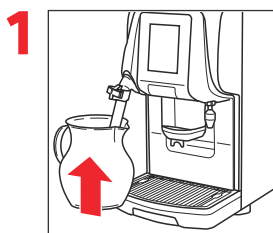
! Warning: Hot surface
警告：表面热



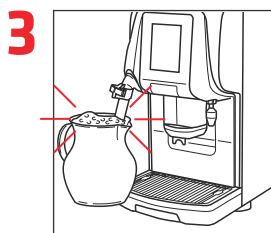
Press button, when both buttons are blinking. A steam jet purges the iSteam
当两个按钮都在闪烁时按下按钮。蒸汽喷嘴可净化 iSteam



Press and hold button to increase the temperature
按住按钮可激活更高温度

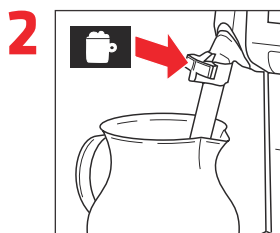


1 Submerge iSteam in milk
将 iSteam 浸没在牛奶中

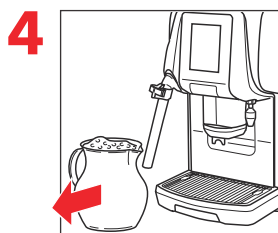


3 Wait for end of preparation
等待制备结束

! To stop: Press the button again
or press STOP
再次按下按钮或按“停止”可
手动中止



2 Press left button for foamed milk
按左侧按钮可制作奶泡



4 Remove product when finished
完成时取出产品

or | 或



Press right button for hot milk
按右侧按钮可制作热牛奶



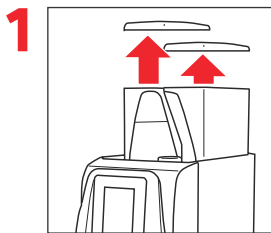
5 Clean iSteam
清洁 iSteam

During use...

使用过程中...

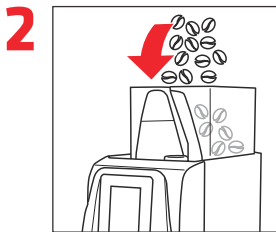
Fill up coffee beans

填加咖啡豆



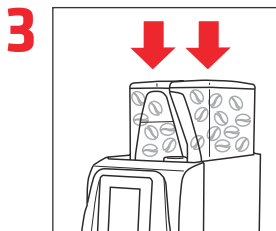
Open bean hopper
打开咖啡豆容器

! Unlock with key if necessary
必要时使用钥匙解锁



Fill up coffee beans
填加咖啡豆

! Never mingle different blends
不要混合不同的咖啡豆



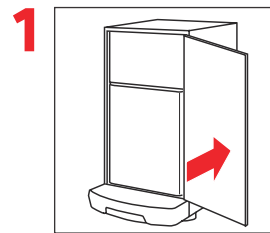
Close bean hopper
关闭咖啡豆容器

Fill up milk

填加牛奶

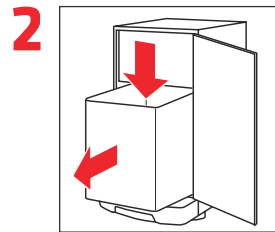
For best results: store milk at $\leq 5^{\circ}\text{C}$ ($\leq 41^{\circ}\text{F}$).

为取得最佳结果：在 $\leq 5^{\circ}\text{C}$ ($\leq 41^{\circ}\text{F}$) 的温度下存放牛奶



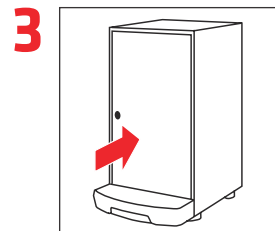
Open door/cover
打开门/盖子

! Unlock with key if necessary
必要时使用钥匙解锁



Fill up/Replace milk
填加/更换牛奶

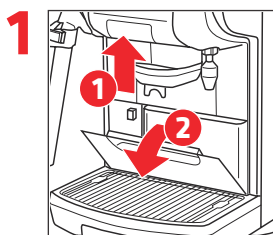
! Clean milk container (if applicable)
清洁牛奶容器（如果适用）



Close door/cover
关闭门/盖子

Empty grounds drawer

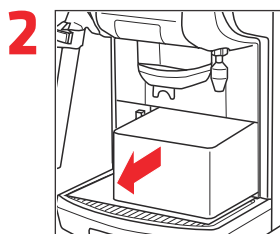
清空咖啡渣存放盒



Open front cover

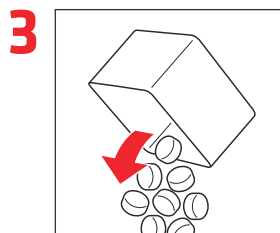
打开前盖

! Unlock with key if necessary
必要时使用钥匙解锁



Remove grounds drawer

取出咖啡渣存放盒



Empty grounds drawer

清空咖啡渣存放盒



Insert grounds drawer

插入咖啡渣存放盒



Close front cover

关闭前盖

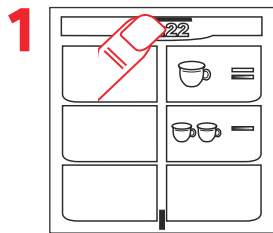


Daily cleaning (Touch)

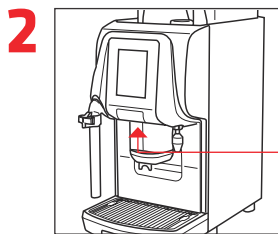
日常清洁（触摸屏）

! Do not clean the machine with jets of water or immersing in water!
不要通过喷水或浸入水中的方式清洁咖啡机！

! Do not use abrasive sponges and detergents or solvents! If cleaner is required, follow the instructions on the package!
不要使用海绵磨块或溶剂！如果需要清洁设备，请遵循包装上的说明！



1 Press 3x quickly for direct access or 5 seconds for menu access
快速按 3 下可直接访问，或者按 5 秒钟，进行菜单访问



2 Follow on-screen information
按照屏幕信息操作

● Process running
流程正在运行

● Input required
所需的输入

Variants:
(via menu access)
变化：
(通过菜单访问)

«Display» Touchpad disabled for 30 seconds
«显示» 触控板禁用 30 秒

«Rinse» Rinsing of the system
«冲刷» 系统的冲刷



3 Clean housing with damp cloth
用湿布清洁外壳



4 Clean steam wand/iSteam
清洁蒸汽棒/iSteam

iSteam:

! Unscrew nozzle for cleaning
拧下喷嘴，进行清洁



5 Clean drip grid and drip tray
清洁滴水隔栅和滴水护套



Daily cleaning (Keypad)

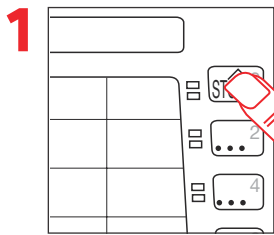
日常清洁（键盘）

! **Do not clean the machine with jets of water or immersing in water!**

● 不要通过喷水或浸入水中的方式清洁咖啡机！

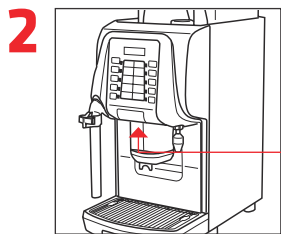
! **Do not use abrasive sponges and detergents or solvents! If cleaner is required, follow the instructions on the package!**

● 不要使用海绵磨块或溶剂！如果需要清洁设备，请遵循包装上的说明！



1 Press 3x quickly for direct access or 5 seconds for menu access

快速按 3 下可直接访问，或者按 5 秒钟，进行菜单访问



2 Follow on-screen information
按照屏幕信息操作

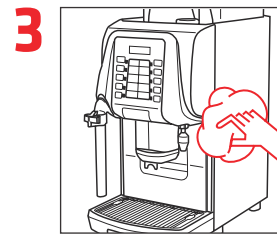
● Process running
流程正在运行

● Input required
所需的输入

Variant:
(via menu access)

«Rinse» Rinsing of the system
«冲刷» 系统的冲刷

变化：
(通过菜单访问)



3 Clean housing with damp cloth
用湿布清洁外壳



4 Clean steam wand/iSteam
清洁蒸汽棒/iSteam

iSteam:

! Unscrew nozzle for cleaning
拧下喷嘴，进行清洁



5 Clean drip grid and drip tray
清洁滴水隔栅和滴水护套

Weekly cleaning of the bean hoppers

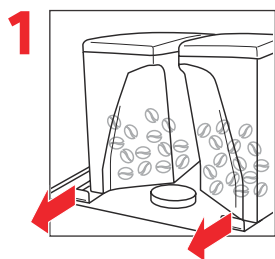
每周清洁咖啡豆容器

! Switch off the appliance before removing the bean hopper!

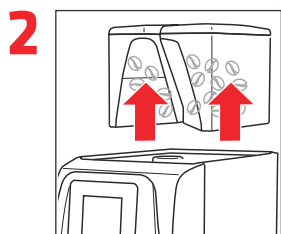
! 拆下咖啡豆容器前关闭此设备！

! Do not use abrasive sponges and detergents or solvents! If cleaner is required, follow the instructions on the package!

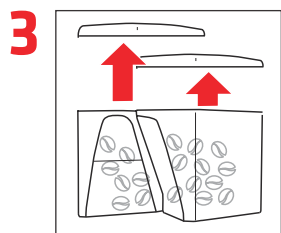
! 不要使用海绵磨块或溶剂！如果需要清洁设备，请遵循包装上的说明！



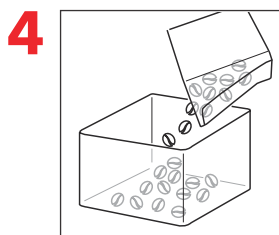
1 Unlock the bean hopper
解除咖啡豆容器的锁定



2 Remove bean hopper
拆下咖啡豆容器



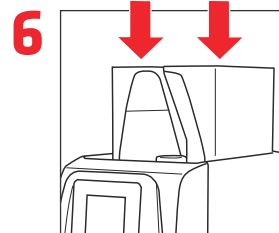
3 Remove bean hopper lid
拆下咖啡豆容器盖



4 Empty bean hopper
清空咖啡豆容器



5 Clean with a damp cloth
用湿布清洁

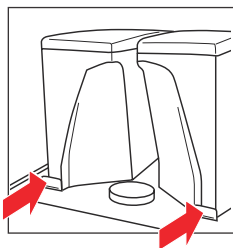


6 Reattach bean hopper
重新连接咖啡豆容器

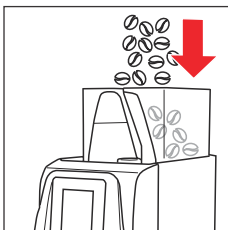
Unlocking bean hopper for self-service

解锁咖啡豆容器以实现自助服务

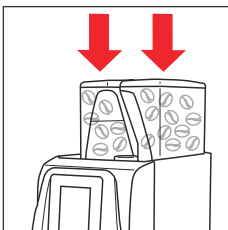
7 Lock bean hopper
锁定咖啡豆容器



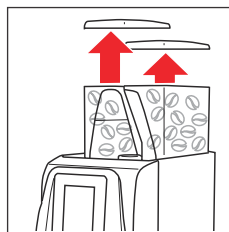
8 Fill coffee beans
填加咖啡豆



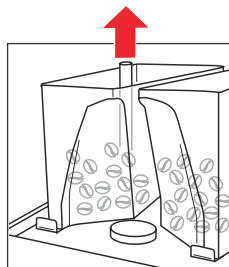
9 Close bean hopper
关闭咖啡豆容器



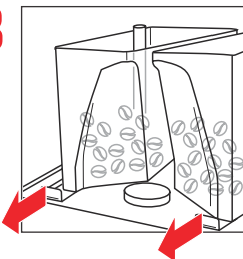
1 Remove bean hopper lid
拆下咖啡豆容器盖



2 Pull safety bar upwards
向上推安全杆



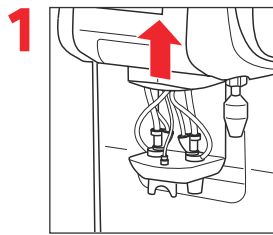
3 Unlock the bean hopper
解除咖啡豆容器的锁定



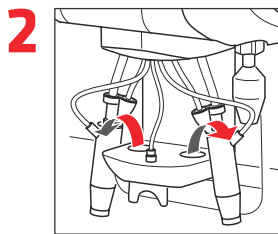
Weekly cleaning (with fridge)

每周清洁（配有冰箱）

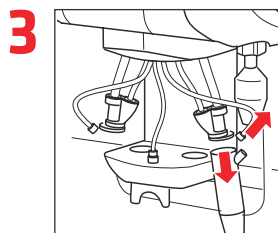
! Do not use abrasive sponges and detergents or solvents! If cleaner is required, follow the instructions on the package!
不要使用海绵磨块或溶剂！如果需要清洁设备，请遵循包装上的说明！



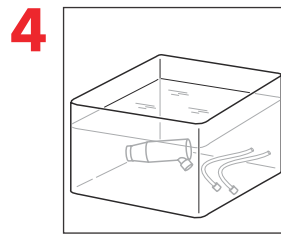
Lift up outlet cover
向上提出口盖



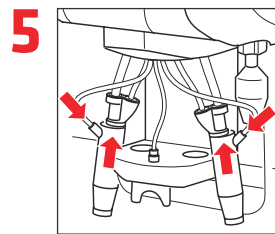
Remove frother heads from outlet holder
从出口固定装置中拆下奶泡机头



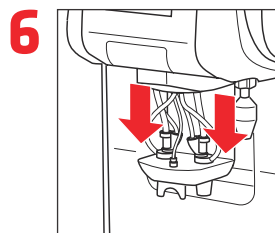
Remove frother heads
拆下奶泡机头



Soak separated parts over night in cleaning solution and rinse clean
然后冲刷干净晚上将单独部件浸泡在清洁溶液中，

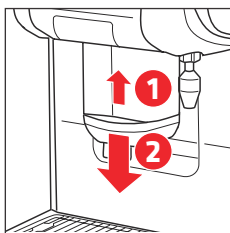


Reattach frother heads
重新连接奶泡机头



Reinsert the frother heads into outlet holder
将奶泡机头重新插入到出口固定装置中

7



Pull down front cover by moving the outlet up and then pulling it down

通过提升并且向下拉出口，向下拉出口盖

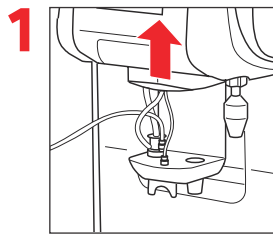


Caution: Do not bend tubes
注意：不要弯曲软管

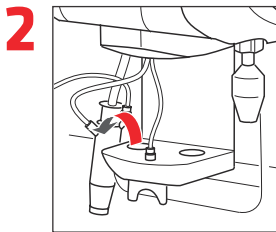
Daily cleaning (with cooling box)

每周清洁（配有冷藏箱）

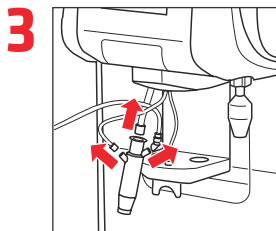
! Do not use abrasive sponges and detergents or solvents! If cleaner is required, follow the instructions on the package!
不要使用海绵磨块或溶剂！如果需要清洁设备，请遵循包装上的说明！



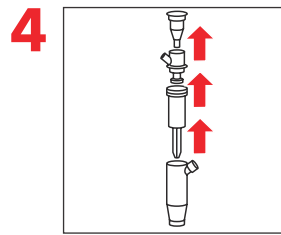
1 Lift up outlet cover
向上提出口盖



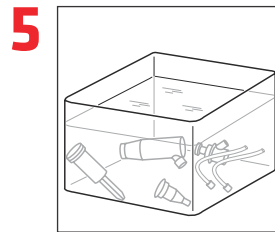
2 Remove frother head from outlet holder
从出口固定装置中拆下奶泡机头



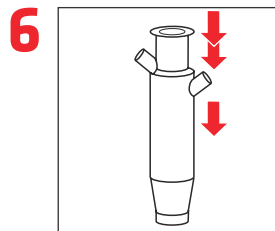
3 Remove all tubes
拆下所有软管



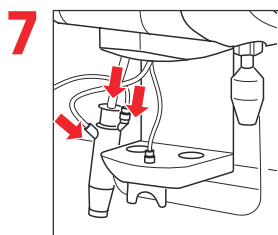
4 Disassemble frother head
可拆卸奶泡机头



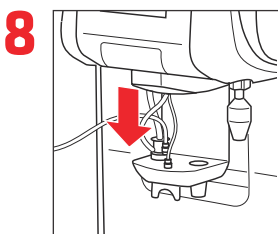
5 Soak separated parts over night in cleaning solution and rinse clean
然后冲刷干净晚上将单独部件浸泡在清洁溶液中，



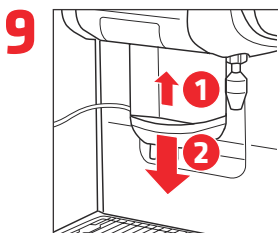
6 Reassemble frother head
重新组装奶泡机头



7 Reattach tubes
重新连接软管



8 Reinsert the frother head into outlet holder
将奶泡机头重新插入到 出口固定装置中



9 Pull down front cover by moving the outlet up and then pulling it down
通过提升并且向下拉出口，向下拉出口盖

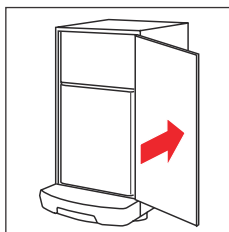
! Caution: Do not bend tubes
注意：不要弯曲软管

Weekly cleaning of the fridge

每周清洁冰箱

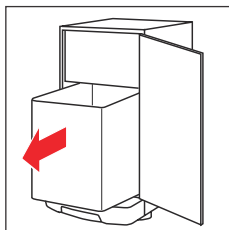
! Do not use abrasive sponges and detergents or solvents! If cleaner is required, follow the instructions on the package!
不要使用海绵磨块或溶剂！如果需要清洁设备，请遵循包装上的说明！

1



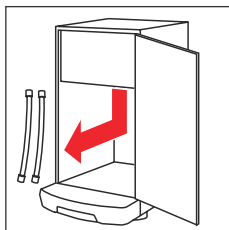
Open the fridge and switch it off
打开冰箱然后关闭

2



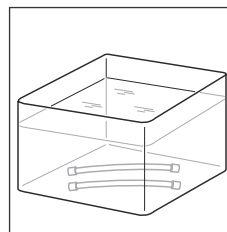
Remove milk container
拆下牛奶容器

3



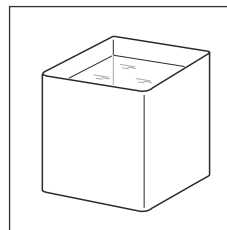
Remove suction tube/connector
拆下吸管/接口

4



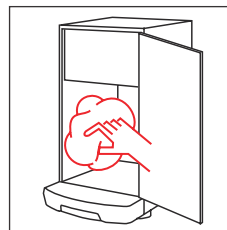
Clean suction tube/connector with detergent
用清洁剂清洁吸管/接口

5



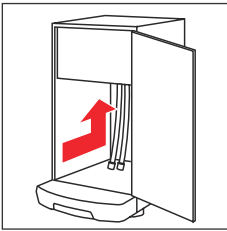
Clean milk container
清洁牛奶容器

6



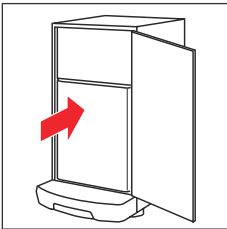
Clean fridge inside with damp cloth
用湿布清洁冰箱内部

7



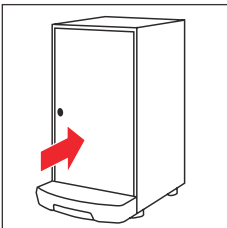
Assemble suction tube/connector
组装吸管/接口

8



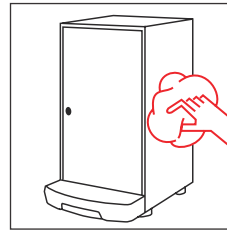
Place milk container
插入牛奶容器

9



Switch the fridge on and close it
打开冰箱电源并关闭冰箱

10

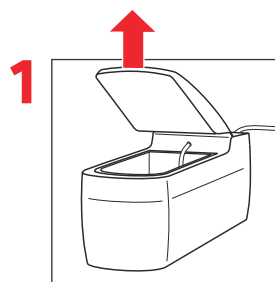


Clean housing with damp cloth
用湿布清洁外壳

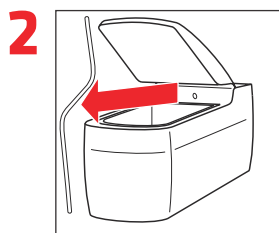
Weekly cleaning of the coolbox

每周清洁冷藏箱

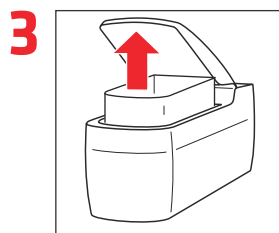
! Do not use abrasive sponges and detergents or solvents! If cleaner is required, follow the instructions on the package!
不要使用海绵磨块或溶剂！如果需要清洁设备，请遵循包装上的说明！



Open the cooling box
打开冷藏箱



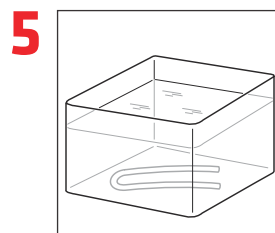
Remove suction tube completely
完全拆下吸管



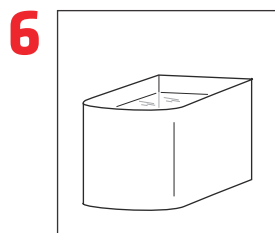
Remove milk container
拆下牛奶容器



Clean inside with damp cloth
用湿布清洁内部

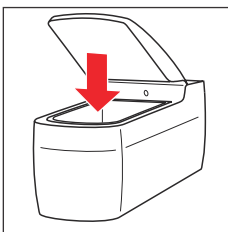


Clean suction tube with detergent
用清洁剂清洁吸管



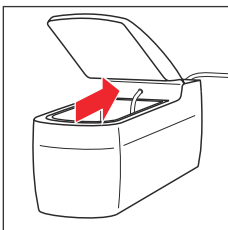
Clean milk container
清洁牛奶容器

7



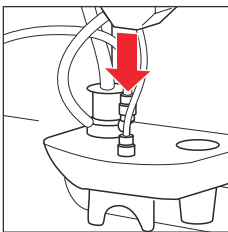
Insert milk container
插入牛奶容器

8



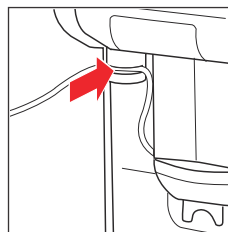
Insert suction tube
插入吸管

9



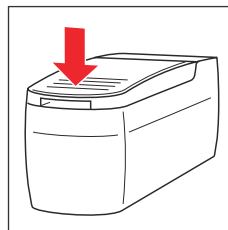
Connect suction tube to frother head
将吸管连接到奶泡机头

10



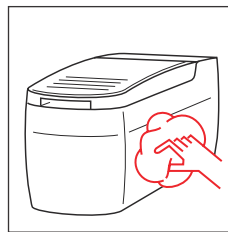
Attach tube to pinch valve
将软管连接到节流阀上

11



Close the cooling box
关闭冷藏箱

12



Clean housing with damp cloth
用湿布清洁外壳



Content

目录

Manager 管理員

Settings (Touch) 设置 (触摸屏)	32
Settings (Keypad) 设置 (键盘)	34
Menu «Product configuration» «产品配置» 菜单	36
Menu «Machine Set-up» «机器设置» 菜单	38
Menu «Cleaning» «清洁» 菜单	39
Menu «Touch-screen customization» «触摸屏自定义» 菜单	40
Menu «Counters» «计数器» 菜单	42
Menu «Date & Time» «日期与时间» 菜单	45
Configuring new products (Touch) 配置新产品 (触摸屏)	46
Uploading pictures/videos 上传图片 / 视频	48
Changing the label (Keypad) 更改标签 (键盘)	49



Settings (Touch)

设置（触摸屏）

Settings are password protected (default password: 1927)

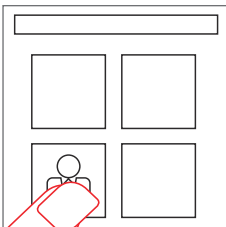
设置具有密码保护（默认密码：1927）

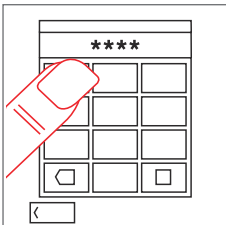
Depending on the configuration different settings are available

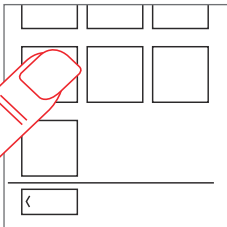
根据配置，可使用不同设置

1  Access menu
访问菜单

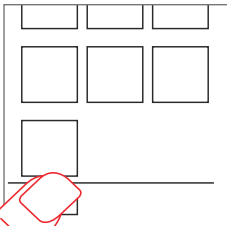
! Touch clock for 5 sec.
按 5 秒钟

2  Activate manager menu
访问管理员菜单

3  Enter password and confirm
输入密码

4  Select setting
选择设置

5  Modify and store settings
修改和保存设置

6  Leave menu
离开菜单

Accessible settings

可访问的设置

for example...

例如...

Refer to menu...

参考菜单...

on page...

在第...页上

Product configuration

产品配置

Product name, type, icon, price...
产品名称、类型、图标、价格...

Product configuration
产品配置

36

Machine setup

咖啡机设置

Function mode, buzzer, language ...
功能模式、蜂鸣器、语言...

Machine setup
咖啡机设置

38

Touch screen

触摸屏

Pages, energy saving, backup, promotion
页面、节能、备份、促销

Touch screen
触摸屏

40

Date & Time

日期与时间

Date & Time, Auto power ON
日期与时间，自动开启

Clock settings
始终设置

41

Cleanings

清洁

Cleaning time, self-service cleaning...
清洁时间，自助清洁...

Cleaning settings
清洁设置

39

Counters

计数器

Product counters, lifetime counters, consumptions
产品计数器、生命周期计数器、消费

Counters
计数器

42



Settings (Keypad)

设置（键盘）

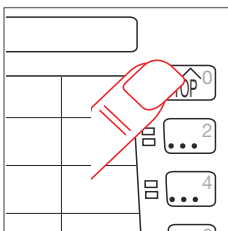
Settings are password protected (default password: 1927)

设置具有密码保护（默认密码：1927）

Depending on the configuration different settings are available

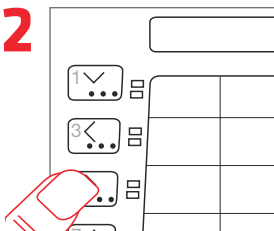
根据配置，可使用不同设置

1 Access menu
访问菜单



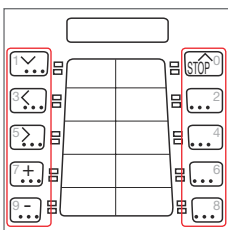
! Press and hold STOP 5 sec.
! 按住“停止”5秒钟。

2 Access manager menu
访问管理员菜单

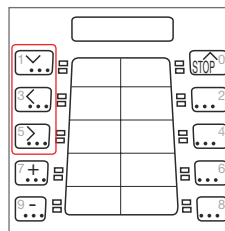


! Tap repeatedly until Manager Menu appears
! 搜索与选择管理员菜单

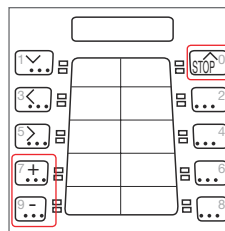
3 Enter password
输入密码



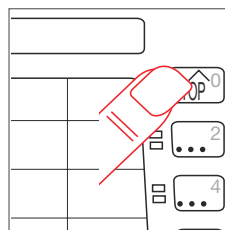
4 Select setting
选择设置









5 Modify and store settings
修改和保存设置



6 Leave menu
离开菜单



! Press repeatedly
! 反复按

* Keypad: 键盘 :	Select setting 选择设置	 
		
		
	Change setting 更改设置	
		

Accessible settings

可访问的设置

for example...

例如...

Refer to menu...

参考菜单...

on page...

在第...页上

Product configuration

产品配置

Product name, type, price...

产品名称、类型、价格...

Product configuration

产品配置

36

Machine setup

咖啡机设置

Function mode, buzzer, language ...

功能模式、蜂鸣器、语言...

Machine setup

咖啡机设置

38

Date & Time

日期与时间

Date & Time, Auto power ON

日期与时间，自动开启

Clock settings

始终设置

40

Cleanings

清洁

Cleaning time, self-service cleaning...

清洁时间，自助清洁...

Cleaning settings

清洁设置

39

Counters

计数器

Product counters, lifetime counters, consumptions

产品计数器、生命周期计数器、消费

Counters

计数器

42

> Product configuration

产品配置

Settings

设置

-
- * ✓ **Name** Product name: selectable from a list of names or enter custom names
名称 产品名称：可从名称列表中进行选择，或者输入自定义名称
-
- > ** **Icon** Icon selectable by a set of icons filtered by the parameter «Type»
图标 图标，可通过 «类型» 参数过滤的一系列图标进行选择
-
- > **Type** Beverage type: Filters the icons and product parameters
类型 饮品类型：过滤图标和产品参数
-
- > *** **Position** Position related to the keypad button. «0» means drink is not available
位置 与键盘按钮相关的位置。「0」意味着饮品不可用
-
- > **Grams** Ground coffee dose
克 磨制咖啡剂量
-
- > **Coffee source** Source of the ground coffee – left or right grinder or manual for decaf chute
咖啡来源 磨制咖啡来源 – 来自左侧或右侧研磨器，或者通过手动方式从低咖槽出来
-
- > **Impulses** Number of flow meter impulses (1 imp. = 0.5 cl) – will be set with the dosing function
脉冲 流量计脉冲数 (1 imp. = 0.5 cc) - 将使用计量功能加以设置
-
- > **Bypass** Number of flow meter impulses (1 imp. = 0.5 cl). Delivered at end of preparation (optional)
旁路 流量计脉冲数 (1 imp. = 0.5 cc). 咖啡/牛奶结束时提供 (选项)

** Only for model Touch
仅针对触摸屏机型

*** Only for model Keypad
Nur bei Modell Keypad







* Keypad: 键盘 :	Select setting 选择设置	√ 1 ∨ 3 < 5 >	STOP 0
	Change setting 更改设置	7 + 9 -	

Settings 设置

- | | | |
|-----|---|--|
| * > | Pre-Infusion
预湿 | Preinfusion in four levels
四个级别的预湿 |
| > | Tamping pressure
夯压 | Three levels of tamping pressures
三个夯压级别 |
| > | Hot water quantity
热水量 | Water quantity entered in seconds
进入的水量，单位为秒 |
| > | ** Hot water temperature
热水温度 | Tea temperature
茶温度 |
| > | Milk quantity
牛奶量 | Milk quantity entered in seconds for delivering time
交付时间内进入的牛奶量，单位为秒 |
| > | Milk foam
奶泡 | % of foaming milk. 0% = hot milk, 100% = milk foam
% 的奶泡。0% = 热牛奶，100% = 奶泡 |
| > | Price
价格 | Product price
产品价格 |

> Machine setup

咖啡机设置

* Keypad: 键盘 :	Select setting 选择设置	✓ 1 		0 
		< 3 		
		> 5 		
	Change setting 更改设置	7+ 		
		9- 		

Settings 设置

* ✓	Function mode 功能模式	✓	Stand-by mode 待机模式	Sets coffee machine in stand-by 在待机模式下设置咖啡机
		>	Payment system mode 支付系统模式	Sets coffee machine in payment system/register mode 在支付系统/记录器模式下设置咖啡机
		>	Self-service mode 自助模式	Sets coffee machine in self-service mode 在自助模式下设置咖啡机
>	General 一般	✓	Language 语言	Select the display language 选择显示语言
		>	Buzzer 蜂鸣器	Activate buzzer 激活蜂鸣器
		>	Change password 更改密码	Set a new manager password using 4 digits 使用 4 个数字设置新管理员密码
		>	Light 灯	Activates machine's lights 激活咖啡机的灯

> Cleaning

清洁

* Keypad: 键盘：	Select setting 选择设置	√ 1 3 5	STOP	^
	Change setting 更改设置	7 9		

Settings

设置

-
- * ✓ **Cleaning time**
清洁时间
 - Daily cleaning schedules
日常清洁计划
-
- > **Self-service cleaning**
自助清洁
 - Enables/disables the daily cleaning in self-service mode
启用/禁用自助模式下的日常清洁

Touch screen

触摸屏

Settings

设置

Pages 页面	Customize 自定义		Name 名称	Page name from selection list or free editable 来自选择列表或可自由编辑的页名称
		Press «Settings» to access submenu 按 «设置» 可访问子菜单	Background 背景	Background colour scheme 背景颜色方案
			Order 顺序	Set the order of the pages 设置页面的顺序
			Visible 可视	Activate page 激活页
	Time to home 返回首页的时间		Time to home 返回首页的时间	Time after which it automatically returns to home page 在自动返回到首页前时间页仍然显示
Backup 备份	Backup settings 备份设置		Starts backup after confirmation 确认后开始备份	
	Restore setting 恢复设置	User Backup 用户备份	Restores user backup files 恢复用户备份文件	
		Auto Backup 自动备份	Restores auto backup files 恢复自动备份文件	
		Clear backup memory 清空备份内存	Delete all user or auto backups 删除所有用户或自动备份	

Settings 设置

		Default settings 默认设置	Load the default settings (factory settings) 加载默认设置（出厂设置）
Energy saving 节能	Screen saver 屏幕保护程序	Start time 开始时间	Time to start screen saver 启动屏幕保护程序的时间
		Picture time 图片时间	Time per picture 每图片的时间
		Transition mode 转换模式	Mode, in which the pictures will be displayed 模式，图片将如何显示
		Sequence 顺序	Up to 10 pictures can be selected 最多可选择 10 张图片
	Backlight 低电能	Time to reduce backlight of display 降低显示屏背光的时间	
	Sleep Mode 睡眠模式	Time to switch off display 关闭显示屏的时间	
Promotion 促销	Promo image 促销图像	Used in self service during drink preparation – only if no video activated 在饮品制备过程中，在自助服务中使用 – 仅在视频未激活的情况下	
	Promo videos 促销视频	Used in self service during drink preparation 在饮品制备过程中，在自助服务中使用	







> Counter

计数器

Settings

设置

* > Products 制品	∨ Type 类型	∨ Total 总计	Total amount of brewings of all beverages since last reset 自上次重置起所有饮品煮烧的总次数
> Coffee 咖啡		> Coffee 咖啡	Number of coffee beverages brewed since last reset 自上次重置起煮烧的咖啡饮品数
> Coffee & Milk 咖啡与牛奶		> Coffee & Milk 咖啡与牛奶	Number of coffee & milk beverages brewed since last reset 自上次重置起煮烧的咖啡与牛奶饮品数
> Milk 牛奶		> Milk 牛奶	Number of milk beverages brewed since last reset 自上次重置起煮烧的牛奶饮品数
> Hot water 热水		> Hot water 热水	Number of hot water beverages brewed since last reset 自上次重置起煮烧的热水饮品数
> iSteam foamed iSteam 泡沫		> iSteam foamed iSteam 泡沫	Number of foamed milk made using the iSteam foamed button 使用 iSteam 泡沫功能制作的奶泡数
> iSteam steamed iSteam 蒸汽		> iSteam steamed iSteam 蒸汽	Number of steamed milk made using the iSteam Steam button 使用 iSteam 蒸汽按钮制作的热牛奶数
> Products 制品			Displays the number of brewing of each beverage since last reset 显示自上次重置起每种饮品的煮烧次数
> Reset counters 重置计数器			Reset all product counters. It also shows the last date and time when reset counters made 重置所有产品计数器。它还显示了上次重置计数器时的日期和时间

* Keypad: 键盘 :	Select setting 选择设置	 
		
		
	Change setting 更改设置	
		

Settings 设置

* > Maintenance 维护	<ul style="list-style-type: none"> ✓ Water softener 水软化设施 ✓ Reset filter 重置过滤器 	Reset number of liters of water used since the last maintenance 重置自上次维护起用水的升数
> Lifetime counters 生命周期计数器	<ul style="list-style-type: none"> ✓ Type 类型 	<ul style="list-style-type: none"> ✓ Total 总计 Total amount of brewings of all beverages 所有饮品煮烧的总次数 > Coffee 咖啡 Total amount of coffee beverages brewed 煮烧的咖啡饮品总量 > Coffee & Milk 咖啡与牛奶 Total amount of coffee&milk beverages 咖啡与牛奶饮品总量 > Milk 牛奶 Total amount of milk beverages brewed 煮烧的牛奶饮品总量 > Hot water 热水 Total amount of hot water beverages brewed 煮烧的热水饮品总量 > iSteam foamed iSteam 泡沫 Total amount of foamed milk made using the iSteam 使用 iSteam 制作的奶泡总量 > iSteam steamed iSteam 蒸汽 Total amount of steamed milk made using the iSteam 使用 iSteam 制作的热牛奶总量
> Products 制品		Displays the number of brewing of each beverage 显示每种饮品的煮烧次数

>Counter

计数器

| Settings

设置

- * > Maintenance 维护
- > Lifetime counters 生命周期计数器
- * > Cycles 周期
Number of brewing cycles during coffee machine lifetime
咖啡机生命周期中的煮烧次数
- > Water 水
Shows the total quantity of water used during coffee machine lifetime
显示咖啡机生命周期内用水的升数

> Date & Time

日期与时间

* Keypad: 键盘 :	Select setting 选择设置	√ 1 3 5	STOP
	Change setting 更改设置	7 9	

Settings

设置

* √ Clock 时钟	√ Date mode 日期模式	Defines date mode 定义日期模式
	> Set date 设置日期	Set date with year, month and day 用年、月、日设置日期
	> Time mode 时间模式	Defines time mode 12h or 24h 定义时间模式，12 小时或 24 小时
	> Set time 设置时间	Time setting 时间设置
> Auto power ON 自动开启	√ Enable Auto power 启用自动电源	Activates the auto power function - Touch: display shows an «A» in the header 激活自动电源功能 - 触摸：显示屏在标题中显示 «A»
	> Sunday ON 星期日时间开启	Set the switch on time for Sundays 设置星期日的开启时间
	> Sunday OFF 星期日时间关闭	Set the switch off time for Sundays 设置星期日的关断时间
	> Copy to all? 复制到全部？	Copy Sunday settings to all weekdays 将星期日设置复制到所有天

Each week day can be set individually with the following menu options. Use the „Copy to all“ button to copy the Sunday settings to all week days. For days off set the ON and OFF values to the same time.

可按照对星期日进行设置的相同方式对每一天进行不同设置，或者使用“复制到全部”对所有天重复星期日计划。· 关闭日 - 将“打开”和“关闭”置于相同时间。

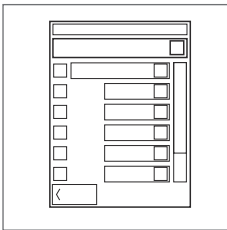


Configuring new products (Touch)

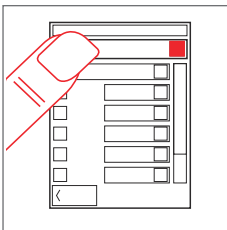
配置新产品（触摸屏）

New products need to be defined first, then assigned to a display page

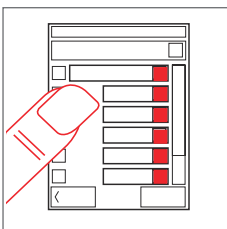
在将新产品放置到页面上前必须首先对其进行定义

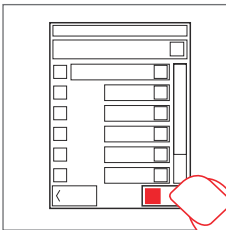
- 

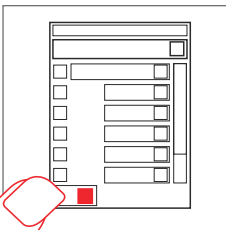
1 Access «Product configuration» menu
访问 «产品配置» 菜单

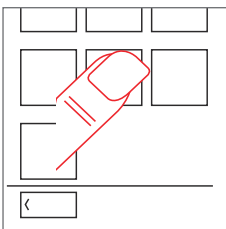
! See Settings (Touch) page 40
• 参见第 40 页设置（触摸屏）
- 

2 Select position in product list
选择产品列表中的位置

! Occupied positions will be overwritten
• 已占用的位置将被覆盖
- 

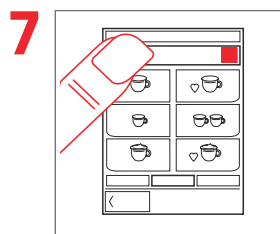
3 Define the product. See p. 36
命名产品并设置参数。参见第 36 页
- 

4 Save product definition
保存产品定义
- 

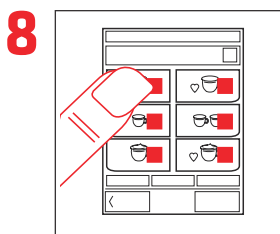
5 Close «Product configuration» menu
关闭 «产品配置» 菜单
- 

6 Access «Pages» menu
访问 «页面» 菜单

! See Settings (Touch) page 40
• 参见第 40 页设置（触摸屏）

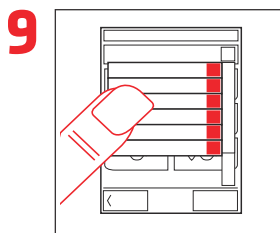


7 Select product page
选择产品页

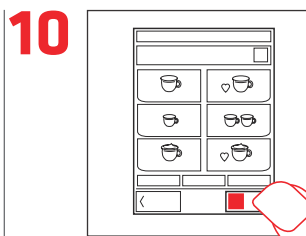


8 Select icon position
选择图标位置

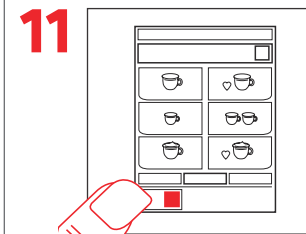
! Occupied positions will be overwritten
! 已占用的位置将被覆盖



9 Choose product from product list
从产品列表中选择产品



10 Save settings
保存设置



11 Close «Pages» menu
关闭 «页面» 菜单

Uploading pictures/videos (Touch)

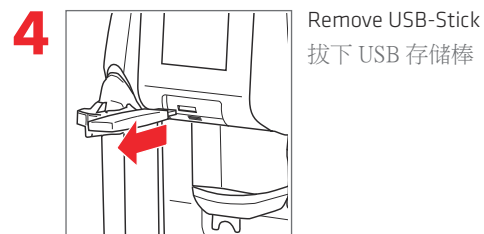
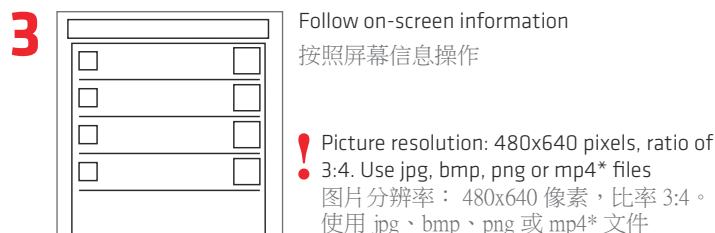
上传图片/视频（触摸屏）

Data to upload must be saved in the root directory of the USB drive

要上传的数据必须保存在 USB 驱动器的根目录下

To save memory erase all non used files on the ONE

要节省内存，擦除 ONE 上所有未使用的文件



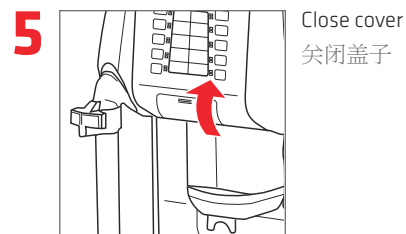
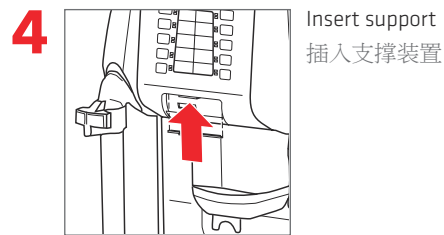
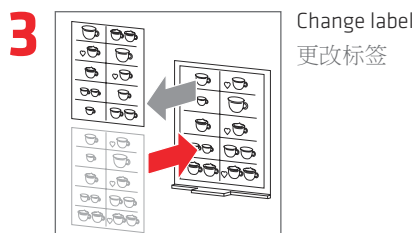
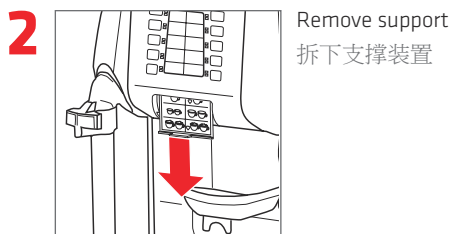
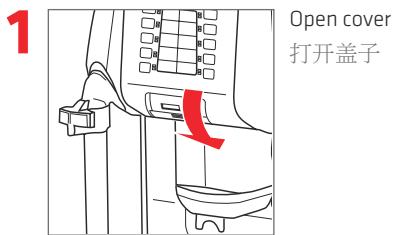
* Format: AVC, Format/Info: Advanced Video Codec, Format profile: Baseline@L3.0, Format settings: CABAC: No, ReFrames: 1 frame, Codec ID: avc1, Codec ID/Info: Advanced Video Coding, Bit rate mode: Variable, Bit rate: 986 Kbps, Width: 640 pixels, Height: 480 pixels, Display aspect ratio: 4:3, Frame rate mode: Constant, Frame rate : 25.000 fps, Standard: PAL, Resolution: 24 bits, Colorimetry: 4:2:0, Scan type: Progressive, Bits/(Pixel*Frame): 0.128
Do not include an audio track!

Changing the label (Keypad)

更改标签 (键盘)

A new label can be printed on any printer

可在任何打印机上打印新标签





Content

目录

General information

一般信息

Display messages 显示消息.....	52
Installation and start-up 安装与启动.....	54
List of errors 错误列表.....	62
List of warnings 警告列表.....	63
What if... 出现故障时怎么办...	65
Technical data 技术数据.....	66
Safety instructions 安全说明.....	68
Legal information 法律信息.....	70
Optional equipment 可选设备.....	71

Display messages

显示消息



Display (Touch) 显示屏（触摸屏）

Perform the preventive maintenance
执行预防性维护

Perform the softener regeneration
执行软化设施再生

Perform the daily cleaning
执行日常清洁

Perform the iSteam purge
执行 iSteam 净化

Drawer full. Please empty it
咖啡渣存放盒已满。请清空

Coffee missing. Please refill the hopper!
缺少咖啡。请向容器中加入咖啡！

Milk missing. Please refill the container
缺少牛奶 请向容器中加入牛奶

Water missing from trolley
移送装置缺水

Machine blocked. Perform daily cleaning
咖啡机阻塞。执行日常清洁



Display (Keypad) 显示屏（键盘）

Maintenance
维护

Softener regen.
软化设施再生。

Daily cleaning
日常清洁

Purge iSteam
净化 iSteam

Drawer full
咖啡渣存放盒已满

Coffee missing
缺少咖啡

Milk missing
缺少牛奶

Water missing
缺水

Machine blocked - Perform cleaning
咖啡机阻塞 - 执行清洁



Solution

溶液

Perform the preventive maintenance - Please contact your EGRO service

执行预防性维护 - 请联系您的 EGRO 服务人员

Perform the softener regeneration - Please contact your EGRO service

执行软化设施再生 - 请联系您的 EGRO 服务人员

Perform daily cleaning

执行日常清洁

Purge iSteam

净化 iSteam

Drawer full - empty grounds drawer

咖啡渣存放盒已满 - 清空咖啡渣存放盒

Coffee missing - refill bean hoppers and select coffee product

缺少咖啡 - 向咖啡豆容器中加入咖啡，然后选择咖啡制品

No milk in the container - refill milk

容器中无牛奶 - 加注牛奶

Water missing from trolleys water container

移送装置的水容器缺水

Perform a daily cleaning to unblock the machine

执行日常清洁，以便解决咖啡机堵塞问题

Water hardness

水硬度

A water softening or salt partial removal system must be fitted if the hardness of the water supply is above 5°dKH or 9°fKH, respectively (German or French degrees of carbonate hardness, respectively). The water supply after treatment should be about 5°dKH or 9°fKH, respectively.


如果自来水的硬度高于 5°dKH 或 9°fKH（分别为德国或法国的碳酸盐硬度），则必须安装水软化或部分除盐系统。处理后的自来水应约为 5°dKH 或 9°fKH。

Water softening systems, which are regenerated with cooking salt, are not suitable for coffee machines fitted with steam boilers! Also to be avoided is the connecting of a coffee machine to a central water softening system.


可使用食盐再生的水软化系统不适用于配有蒸汽煮器的咖啡机！此外还要避免将咖啡机连接到中央水软化系统。

Specific safety instructions


特定安全说明


 Installation and start up must only be carried out by an Egro service technician or trained Egro representative with due regard to all local installation regulations.

必须仅由 Egro 服务技术人员或经过培训的 Egro 代表按照所有当地安装法规进行安装和启动。


 The distance between the Egro ONE and the nearest wall must be at least 4 cm (air circulation). There must be sufficient space left above the machine to allow the bean hoppers to be filled.

Egro ONE 与最近墙壁的间距必须至少为 4 cm（空气循环）。咖啡机上方必须留有足够的空间，以便于向咖啡豆容器中填充咖啡豆。


 A water supply faucet and a non-return valve must be fitted, readily accessible, at the front end (building side) of the water supply tube. 必须在自来水软管的前端安装可轻松触及的自来水龙头和止回阀。


 Should the water supply tube need to be lengthened, a neutrally coloured web wound pressure tube must be used. The internal diameter of the extension tube must not be smaller than the one supplied on machine.


如果需要延长供水软管，必须使用自然颜色的网状缠绕的压力软管。延长软管的内部直径不得小于咖啡机上所带软管的内部直径。


 The tubes must be rinsed out before being connected so that no dirt particles get into the Egro ONE.


连接软管前必须将软管冲刷干净，以防止颗粒进入 Egro ONE。


 The Egro ONE must not be set up in areas where water tubes or high pressure cleaners are in use!
不得在正在使用水管和高压清洁设备的区域安装 Egro ONE！

 A qualified electrician must make all electrical connections.
必须由合格的电工进行所有电气连接。

 An electrical switch (mains switch) and/or an electrical socket must be connected, and readily accessible, near the machine.
必须连接电气开关（电源开关）和/或电气插座，并且它们必须位于咖啡机附近可轻松触及的地方。

 The electrical mains switch must isolate the Egro ONE completely from the electrical mains supply. The gap between the contacts must be at least 3mm.
电源开关必须将 Egro ONE 与电源完全隔离。触点之间的间隔必须至少为 3mm。

 For the electricity supply, the data listed on the ID plate must be carefully consulted!
对于电源，必须仔细参考 ID 铭牌上所列的数据！

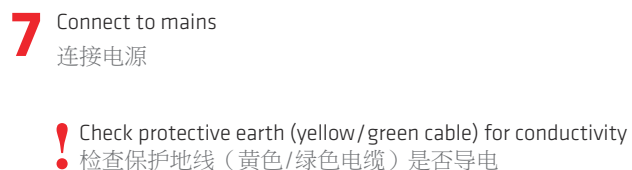
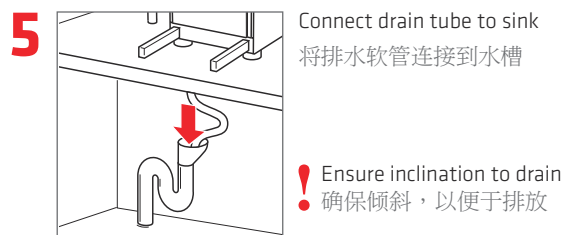
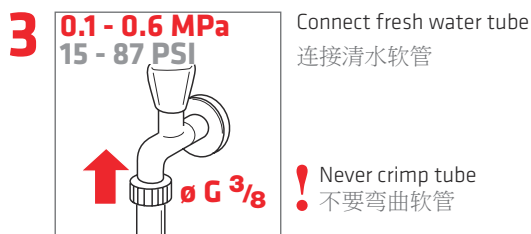
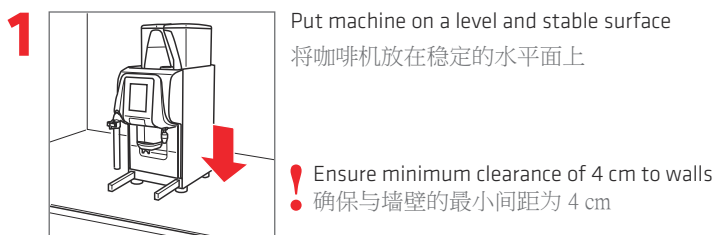
 If the electrical supply cables to the machine are damaged the manufacturer or his service personnel, or an authorized electrician, to avoid any danger, must replace them.
如果咖啡机的电源线受损，为避免任何危险，制造商或其服务人员，或者授权电工必须更换它们。

Installing the coffee machine

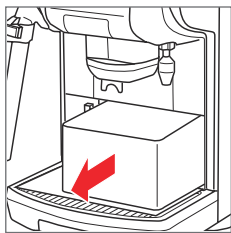
安装咖啡机

Erroneous installation can cause damage to people, animals and things

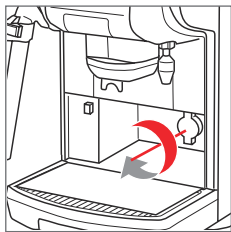
错误安装可能对人和动物等造成伤害



- 9** Remove grounds drawer, remove pouch
取出咖啡渣存放盒，取下袋子



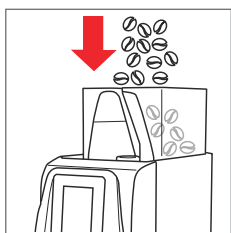
- 10** Open water tap
打开水龙头



- 11** Insert grounds drawer
插入咖啡渣存放盒



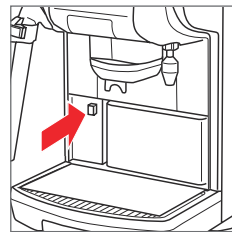
- 12** Fill up coffee beans
填加咖啡豆



- 13** Connect existing accessories devices
连接现有附件设备

! See page 59
! 参见第 59 页

- 14** Switch on machine
打开咖啡机电源



! Close outlet cover
! 关闭出口盖

- 15** Make basic settings (starts automatically)
进行基本设置（自动启动）

- 16** Adjust pump pressure and grinder
调节泵压和研磨器

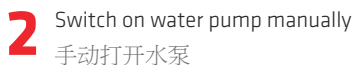
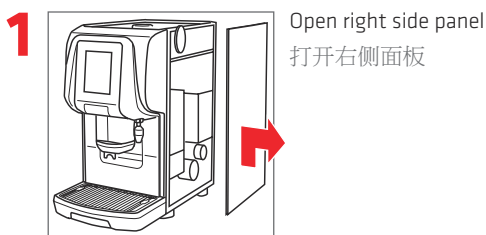
! See page 58
! 参见第 58 页

Basic adjustments

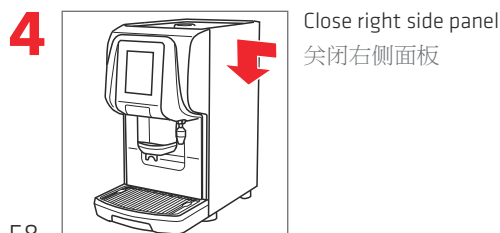
基本调节

Water pressure

水压

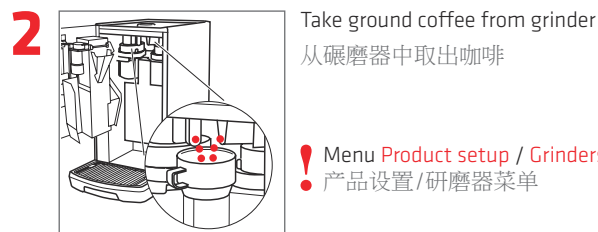


! Menu **Diagnostic / Tests / AC motor test / motor pump**
! 诊断/测试/交流电机测试/电动泵菜单

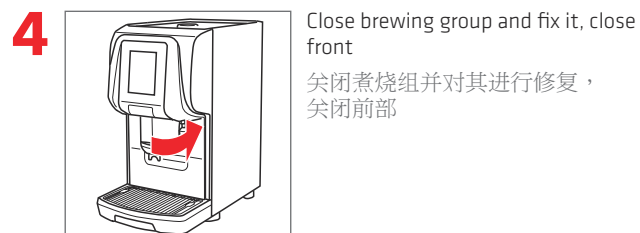


Ground coffee dose

磨制咖啡剂量



! Correct ground coffee amount: 10 g (+/- 1 g)
! 正确粉末量：10 g (+/- 1 g)



Installing the cooling box

安装冷藏箱

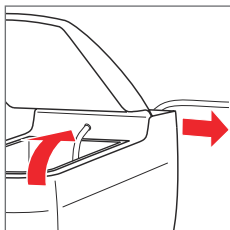
Erroneous installation can cause damage to people, animals and things

错误安装可能对人和动物等造成伤害

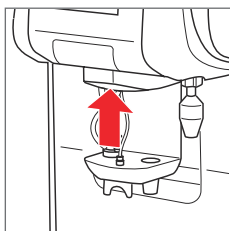
- 1** Place coolbox on the left side of the coffee machine
将冷藏箱放置在咖啡机的左侧



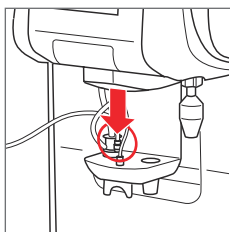
- 2** Conduct tube through backside opening
将软管穿过背部开口



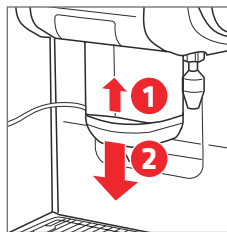
- 3** Lift up outlet cover
向上提出口盖



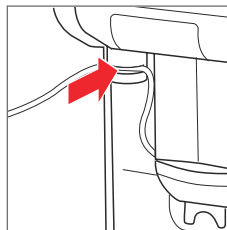
- 4** Connect suction tube to frother head
将吸管连接到奶泡机头



- 5** Pull down outlet cover
向下拉出口盖



- 6** Attach tube to pinch valve
将软管连接到节流阀上



! Do not bend the tube
! 不要弯曲软管

- 7** Plug in cooling box
插上冷藏箱的电源



Installing the fridge

安装冰箱

Erroneous installation can cause damage to people, animals and things

错误安装可能对人和动物等造成伤害

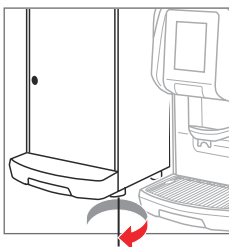
1 Place fridge on the left side of the coffee machine

将冰箱放置在咖啡机的左侧



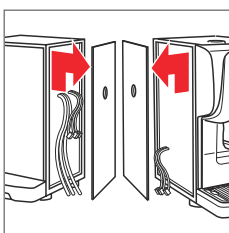
2 Balance unevenness with screw-in foot

使用拧入式支脚找平



3 Open right side panel of the fridge

打开冰箱的右侧面板

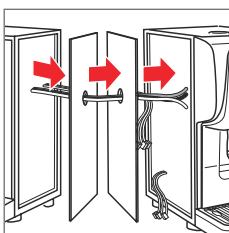


Open left side panel of the coffee machine

打开咖啡机的左侧面板

4 Conduct tubes and cables through side panels

将软管和电缆穿过侧面板

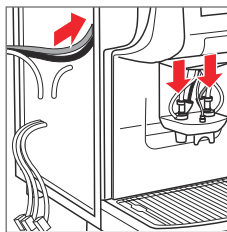


! Consider alignment of side panels

考虑对齐侧面板

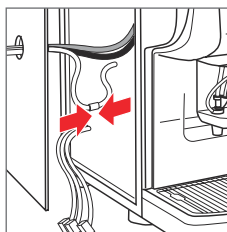
5 Connect milk tubes to frother heads

将牛奶软管连接到奶泡机头



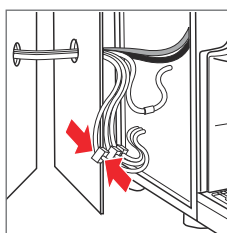
6 Connect rinsing tube

连接冲刷软管



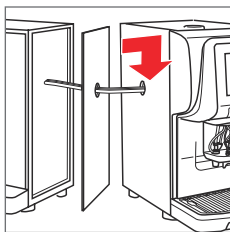
7 Connect electrical cables

连接根电缆



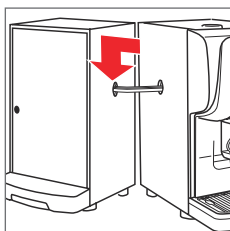
! Do NOT place the plugs between side panels

不要将插头放在两个侧面板之间

8

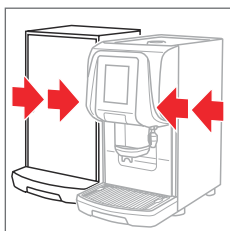
Close coffee machine housing

关闭咖啡机外壳

9

Reattach side panel on the fridge

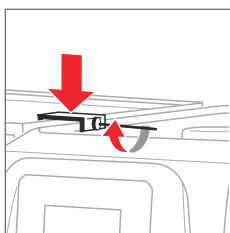
重新连接冰箱上的侧面板

10

Move fridge and coffee machine together

一同移动冰箱和咖啡机

! Lead cables/tubes properly
! 正确导引电缆/软管

11

Attach C-bracket

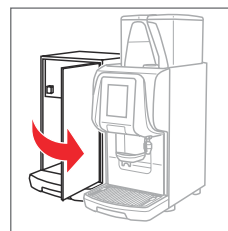
连接 C 形支架

! Fix with screws from side panels
! 使用侧面板上的螺丝固定

12

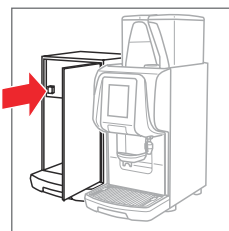
Connect fridge to mains

插上冰箱电源

13

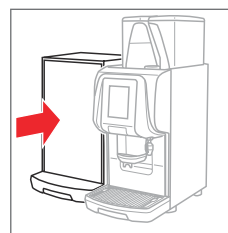
Open the fridge

打开冰箱

14

Switch on the fridge

打开冰箱电源

15

Close the fridge

关闭冰箱

List of errors

错误列表

Error – Coffee machine is blocked – Please call EGRO service

错误 – 咖啡机受阻 – 请致电 EGRO 服务部门

Code 代码	Fault description 故障描述	Code 代码	Fault description 故障描述
<i>E01</i>	RS422 broken link between control board and touch board 控制板与触控板之间的 RS422 链路中断	<i>E10</i>	Winding of the heating element relay interrupted 加热元件继电器的线圈中断
<i>E02</i>	Short circuit +24V AUX, fan or trolley +24V AUX、风扇或移送装置短路	<i>E11</i>	Overheating coffee boiler 咖啡煮器过热
<i>E03</i>	Short circuit +24V valves, brewing group heating element, milk sensor, air pump, relay milk pump +24V 阀、煮烧组加热元件、牛奶传感器、气泵、继电器牛奶泵短路	<i>E12</i>	Overheating steam boiler 蒸汽煮器过热
<i>E04</i>	Short circuit +5V card reader +5V 读卡器短路	<i>E13</i>	Error during upper piston movement 活塞向上运动错误
<i>E06</i>	Short circuit payment system 支付系统短路	<i>E14</i>	Error during lower piston movement 活塞向下错误运动
<i>E08</i>	Short circuit +12V power board +12V 电源板短路	<i>E15</i>	CCI/CSI link between coffee machine and payment system interrupted 咖啡机与支付系统之间的 CCI/CSI 链路中断
<i>E09</i>	Short circuit winding of the heating element relay 加热元件继电器的线圈短路		

List of warnings

警告列表

Warning – Coffee machine works with limitations – Please call EGRO service

警告 – 咖啡机具有使用限制 – 请致电 EGRO 服务部门

Code 代码	Fault description 故障描述	Code 代码	Fault description 故障描述
W01	Short circuit +12V light module +12V 灯模块短路	W09	Short circuit bypass valve [Y6] 旁通阀 [Y6] 短路
W02	Short circuit +24V spindle motor +24V 主轴电机短路	W10	Short circuit fill valve boiler [Y3] 加注阀煮器 [Y3] 短路
W03	Short circuit +5V end switch or encoder spindle motor +5V 终端开关或编码器主轴电机短路	W11	Short circuit right steam valve or pick valve [Y5] 右侧蒸汽阀或拾取阀 [Y5] 短路
W04	Short circuit +12V pressure sensor +12V 压力传感器短路	W12	Short circuit left steam valve [Y4] 左侧蒸汽阀 [Y4] 短路
W05	Short circuit +5V iSteam keypad +5V iSteam 键盘短路	W13	Short circuit cold rinse valve [Y10] 冷冲刷阀 [Y10] 短路
W06	Short circuit +5V flowmeter +5V 流量计短路	W14	Short circuit air valve [Y13A] 气阀 [Y13A] 短路
W07	No signal from flowmeter 流量计无信号	W15	Short circuit fridge right milk valve [Y12B] 冰箱右侧牛奶阀 [Y12B] 短路
W08	Short circuit brewing valve [Y1] 煮烧阀 [Y1] 短路	W16	Short circuit fridge left milk valve [Y12A] 冰箱左侧牛奶阀 [Y12A] 短路

List of warnings

警告列表

Code 代码	Fault description 故障描述	Code 代码	Fault description 故障描述
W17	Short circuit air pump [M6] 气泵 [M6] 短路	W25	Short circuit brewing heater 煮烧加热器短路
W18	Short circuit fridge right relay milk pump [K5] 冰箱右侧继电器牛奶泵 [K5] 短路	W26	Short circuit coffee sensor 咖啡传感器短路
W19	Short circuit fridge left relay milk pump [K4] 冰箱左侧继电器牛奶泵 [K4] 短路	W27	Coffee sensor interrupted 咖啡传感器中断
W20	Short circuit 4TEA cold water valve [Y2A] 4TEA 冷水阀 [Y2A] 短路	W28	Short circuit pressure sensor 压力传感器短路
W21	Short circuit 4EA hot water valve [Y2B] 4EA 热水阀 [Y2B] 短路	W29	Pressure sensor interrupted 压力传感器中断
W22	Short circuit iSteam air valve [Y14A] iSteam 气阀 [Y14A] 短路	W30	Short circuit iSteam sensor iSteam 传感器短路
W23	Short circuit iSteam steam valve [Y14] iSteam 蒸汽阀 [Y14] 短路	W31	iSteam probe interrupted iSteam 探测器中断
W24	Short circuit AUX1 output AUX1 输出短路	W32	Timeout steam boiler filling (120 seconds) 蒸汽煮器填加超时 (120 秒)

What if...

出现故障时怎么办...

Code 代码	Fault description 故障描述
W33	Timeout coffee boiler filling (80 seconds) 咖啡煮器填充超时 (80 秒)
W34	Timeout steam boiler pressure (600 seconds) 超时蒸汽煮器压力 (600 秒)
W35	Timeout coffee boiler temperature 超时咖啡煮器温度
W36	Incompatibility between parameters and the SW version 参数与软件版本之间不兼容
W37	Check the clock on the menu or on the control board 检查菜单或控制板上的时钟
W38	Incompatibility between the messages and the SW 消息与软件之间不兼容



nothing happens

什么也没发生

Is the power supply working?
电源是否正常工作？

Is the fuse for the wall socket fine?
墙壁插座的保险丝是否完好？

Is the main switch switched on?
主开关是否已打开？



only hot water comes instead of coffee

仅出来热水，而不是咖啡

Are the bean hoppers full?
咖啡豆容器是否已满？

Are the sliders of the bean hoppers open?
咖啡豆容器的滑动装置是否已打开？



only steam or hot milk comes instead of milk foam

仅出来蒸气或热牛奶，而不是奶泡

Is the milk container empty?
牛奶容器是否已空？

Is the milk suction tube completely immersed in the milk container?
牛奶吸管是否完全浸在牛奶容器中？

Is the frother head clogged?
奶泡机头部是否阻塞？

Technical data

技术数据

Coffee machine

咖啡机

Dimension (W x D x H)

尺寸 (W x D x H)

300 x 570 x 770 mm
11.81 x 22.44 x 30.31 inch

Weight

重量

57 kg
125.7 lb

Ambient temperature during use

使用过程中的环境温度

+5 - +35 °C
+41 - +95 °F

Min. flow rate

最小流速

5 l/min
1.32 US gal/min

Power rating

额定功率

3.6 kW
6.6 kW

Noise level during use

使用过程中的噪声级别

< 70 dB

Capacity bean hopper

咖啡豆容器的容量

2 x 1.3 kg
2 x 2.9 lb

Max. static pressure

最大静压

0.6 MPa
87 PSI

Power supply

电源

220-240V3~ or 380-415V2N~, 50 / 60Hz (6,6kW)
220-240V~, 50 / 60Hz (6,6kW)
220-240V~, 50 / 60Hz (3,6kW)

Min. flow pressure

最小流动压力

0.1 MPa
15 PSI

We reserve the right to make technical changes

我们保留进行技术更改的权力

Fridge

冰箱

Dimension (W x D x H)/Weight
尺寸 (W x D x H)/重量

*300 x 455 x 580 mm/29 kg
11.81 x 17.91 x 22.83 inch/63.9 lb*

Power rating

额定功率

0.1 kW

Power supply

电源

*230 V~, 50 Hz
230 V~, 60 Hz
120 V~, 60 Hz*

Climate class

气候类型

N/16-32°C

Cooling box

冷藏箱

Dimension (W x D x H)/Weight
尺寸 (W x D x H)/重量

*190 x 327 x 278 mm/4 kg
7.48 x 12.87 x 10.94 inch/8.8 lb*

Power rating

额定功率

0.06 kW

Power supply

电源

230 V~, 50/60 Hz

Cup warmer

暖杯座

Dimension (W x D x H)/Weight
尺寸 (W x D x H)/重量

*300 x 455 x 580 mm/14 kg
11.81 x 17.91 x 22.83 inch/30.9 lb*

Power rating

额定功率

0.42 kW

Power supply

电源

230 V~, 50/60 Hz

Safety instructions

安全说明



The appliance is not to be used by children or persons with reduced physical, sensory or mental capabilities, or lack of experience and knowledge, unless they have been given supervision or instruction.

儿童或身体能力、感觉能力或智力低下或者缺乏经验和知识的人不得使用该设备，除非有人监督或对他们进行了指导。



Don't leave the packing elements (plastic bags, expanded polystyrene, nails, cardboard, etc.) within the reach of children, as these elements are potential sources of danger.

不要将包装物（塑料袋、聚苯乙烯泡沫、钉子、纸板等）放在儿童可触及的地方，因为这些物品可能有危险。



Do not place heavy items on the packaging. Do not stack more than three items of the same kind.

不要将重物放在包装上。不要堆放超过三个同类物品。



Keep the packed machine in a dry place, not exposed to environmental elements and in conditions in which the temperature does not go below 5°C.

将带包装的咖啡机放置在温度不低于 5°C 的干燥位置，不要暴露在环境要素中。



Children should not play with the machine, whether they are supervised or unsupervised.

无论是有人看管还是无人看管的儿童都不应玩咖啡机。



If liquids inside the machine freeze, leave the coffee machine in a place with a minimum temperature of 20°C for at least 20 minutes before switching it on.

如果咖啡机内的液体冻结，在通电前将咖啡机置于最低 20°C 的温度下至少 20 分钟。



Switch off the appliance and disconnect from power supply before changing accessories or approaching parts that move in use.

更换附件或靠近正在使用的移动零件前关闭设备并断开电源。



Do not leave the machine exposed to environmental elements or place them in damp rooms such as bathrooms.


不要将咖啡机暴露在环境要素中，或将它们放置在浴室等潮湿的房间中。





Install the machine on a water repellent surface (laminated, steel, ceramic, etc.) away from heat sources (oven, cooking stove, fireplace, etc.) and in conditions in which the temperature may not go below 5°C. KEEP WARM. Place on even surface.


在温度不低于 5°C 的条件下，将咖啡机安装在远离热源（烤箱、厨灶、壁炉等）的防水表面（层压板、钢板、陶瓷等）上。保持温暖。该表面应保持水平。

 Do not obstruct the drain outlet or drip tray and do not cover with cloths, etc.
不要阻塞吸入或分散隔栅，不要盖布等。


 Only use original spare parts in order to avoid compromising the safety and proper functioning of the machine.
仅使用原始备件，以便避免影响咖啡机的安全性和正确运行。


 In an emergency, such as fire, unusual noise, overheating, etc., take immediate action, disconnect the power and close water taps.
在火灾、异常噪声、过热等紧急事件中，立即断开电源并关闭水龙头。


 The coffee machine and the fridge are fixed together by means of two C-brackets screwed to the lateral panels; power off and disconnect devices from the power supply before removing fastenings.
咖啡机和冰箱是通过用螺丝将两个 C 形支架固定到侧面板上而固定在一起的；拆卸紧固件前关闭设备并断开电源。


 When in doubt, request a detailed diagram of the supplied power from a qualified electrician.
如果有疑问，请向合格电工索要详细电源图。

 Adaptors, multiple sockets and/or extensions must not be used.
不得使用适配器、复式插座和/或延长设备。

 Before connecting the equipment, check if the data on the machine corresponds to your electrical power supply.
连接设备前，检查咖啡机上的数据是否与您的电源相符。

 The power supply must be provided with the following safety devices: efficient grounding connection; section of conductors suitable for absorption capacity; efficient grounding leakage protection circuit breaker.
以下安全设备必须配有电源：有效的接地连接设备；适应吸收能力的导体部分；有效的接地漏电保护断路器。

 Should the power cable be damaged, it has to be replaced by the manufacturer or by its technical service or by a person with equivalent qualification, in order to prevent any risks.
如果电源线受损，为防止任何风险，必须由制造商或其技术服务人员，或者具有等同资格的人员进行更换。

 The coffee machine has to be connected to the fixed installation using a UL listed grounding type plug of proper rating. Plug shall be selected and installed only by qualified personnel. (for US and Canada only).
必须使用 UL 所列的具有正确额定值的接地类插头将咖啡机连接到固定装置上。应仅由合格人员选择和安装插头。（仅限美国和加拿大）。

Legal information

法律信息



In accordance with the European guidelines for safety and EMC.
符合欧洲安全和 EMC 指导原则。



Treatment of waste from electric/electronic equipment. Dispose of the product in accordance with current local regulations concerning differentiated waste disposal in dedicated waste disposal areas. Do not treat as simple urban waste. For any information please contact the manufacturer at the address specified in the user manual. The product complies with the requirements of the new directives introduced for the environmental safeguard and must be properly disposed of at the end of its life cycle.

电气/电子设备的废物处理。按照有关在专门废物处理区域进行分类废物处理的现行地方法规处理本产品。不要将其作为简单的城市垃圾进行处理。有关任何信息，请通过本用户手册中指定的地址联系制造商。本产品符合采用的新环保法令的要求，在其报废时必须正确处理本产品。



Improper installation can cause damage to people, animals and things for which the manufacturer cannot be considered responsible.

安装不当可能对人和动物等造成伤害，制造商可能对因此造成的伤害不负有责任。

Egro ONE is a fully automatic coffee machine that also can be used in staff kitchen areas in shops, offices and other working environments (i.e. farm houses; by clients in hotels, motels and other residential type environments; bed and breakfast type environments).

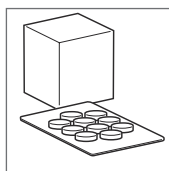
Egro ONE 是一种自动售货机，也可在商店、办公室和其他工作环境（例如农舍；酒店、汽车旅馆和其他居住类型的环境中供客户使用；住宿加早餐的环境）中的员工厨房区域使用。

Optional equipment

可选设备

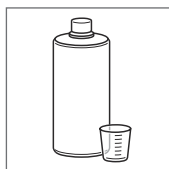
Correct and safe functioning can only be guaranteed by using original Egro spare parts

只有使用 EGRO 附件才能保证正确、安全地运行



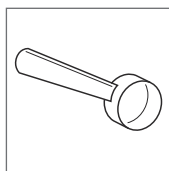
Coffee cleaner
咖啡清洁设备

No. 005990



Milk cleaner
牛奶清洁设备

No. 060928



Dosage spoon 8g
量匙 8g

No. 004775

Contacts

触点



Headquarters, Production Plant and R&D Centers

Rancilio Group s.p.a.

Viale della Repubblica 40
20015 Villastanza di Parabiago
Milano Italy
Ph. +39 0331 408200
Fax +39 0331 551437
www.rancilio.com
info@ranciliogroup.com

Egro Coffee Systems AG

Bahnhofstrasse 66
5605 Dottikon, Switzerland
Tel. +41 (0)56 616 95 95
Fax +41 (0)56 616 95 97
www.egrocoffee.com
info@egrocoffee.com

Worldwide Branch Locations

SPAIN

Rancilio Espana, s.a.
Gran Vía de Carlos III, 84 3ª
Edificio Trade
08028 Barcelona Spain
Ph. +34 902 884 275
Ph. +34 934 923 414
Fax +34 93 496 57 01
www.rancilio.com
info-es@ranciliogroup.com

GERMANY

Egro Deutschland GmbH
Talstrasse 27
D-97990 Weikersheim
Ph. +49 7934 99 29 30
Fax +49 7934 99 29 330
www.egro-deutschland.de
Info-de@ranciliogroup.com

PORTUGAL

Rancilio Portugal Lda
Estrada da Falagueira n° 68 E
2700-365 Amadora-Lisboa Portugal
Ph. + 351 21 019 10 91
Fax + 351 21 019 10 91
www.rancilio.com
info-pt@ranciliogroup.com

USA / CANADA

Rancilio North America Inc.
8102 S.Lemont Rd. #1200
Woodridge, IL 60517 USA
Ph. +1 630 427 1703
Fax +1 630 427 1713
www.rancilio.com
info@rancilio-na.com

SWITZERLAND

Egro Suisse AG
Bahnhofstrasse 66
5605 Dottikon, Switzerland
Tel. +41 (0)56 616 95 95
Fax +41 (0)56 616 95 97
www.egrosuisse.ch
info@egrosuisse.ch

Sales Representative Office

ASIA

Asian Market Access HK Ltd
601 Tak Woo House
17-19 D'aguilar Street Central
Hong Kong
Ph. +852 2521 7839
Fax +852 2521 5787
www.rancilio.com